



HEIRLOOM

**Johanna Valom**

**Stala Contemporary**

5-26 August 2023

Johanna Valom is an oil painter and textile artist based in Perth, Western Australia.

Inspired by tapestries inherited from her grandmother, Valom reflects on the paradoxical emotion of nostalgia and the fleeting nature of memory. She creates abstract landscapes which seek to explore the sublime, the joy, and the whimsy found in mundane everyday scenes. Picturesque cottages, dilapidated sheds and untamed bushland all serve equally as inspiration in her works. Her practice plays with the evocative ability of colour and luscious application of paint; using striking combinations in her focus on abstraction within landscapes. She paints from both direct observation and from memories - in this she continues to consider the importance of both the breaking and preservation of traditions, and the oscillating, tacit dialogue between past and present.

'*HEIRLOOM* to me is not only material but traditional and cultural; deeply rooted in memory.

How precious we hold heirlooms and inheritance. In my work I consider nature and the landscape as heirloom. Inherited history/culture, inherited traditions.

In looking at Western Australian landscapes, cottages and farmland, I feel a connection to my family's migrant history and their origins in Australia. I consider their hardships in the Netherlands to come to Australia. I consider the connection to our heritage at the same time as a striving to move forward and create a new life. I consider the preservation of tradition at the same time as individuality and rebellion from traditions and to some extent cultural identity. The passing of time and the remembering of traditions is a universal experience. In one way or another, people in all places, in all walks of life experience these things.

Colour in my work represents conformity and rebellion. Bold colours within muted and more neutral palettes represent the formation of new traditions and new memories. Splashes of rebellious, sometimes unexpected colour.

The landscape and life within it as a tapestry in itself – sometimes sharp and comprehensible, at other times achingly abstract and removed. At all times tied together and united by the same threads that bind us all – memory, history, and traditions. Interconnectedness.

Titles echo sentimental platitudes and words of encouragement, speaking of perseverance and strength.

Methodical and repetitive brushwork, connecting & responding to traditional needlework and tapestry work – techniques passed down through the generations.'







1 *Between The Branches*

2023 Tufted and looped merino  
wool on monkscloth 52 x 62cm \$1650



2 *Let Me Go*

2023 oil on canvas (framed) 76 x 60cm \$3675



3 *Hold It Close*

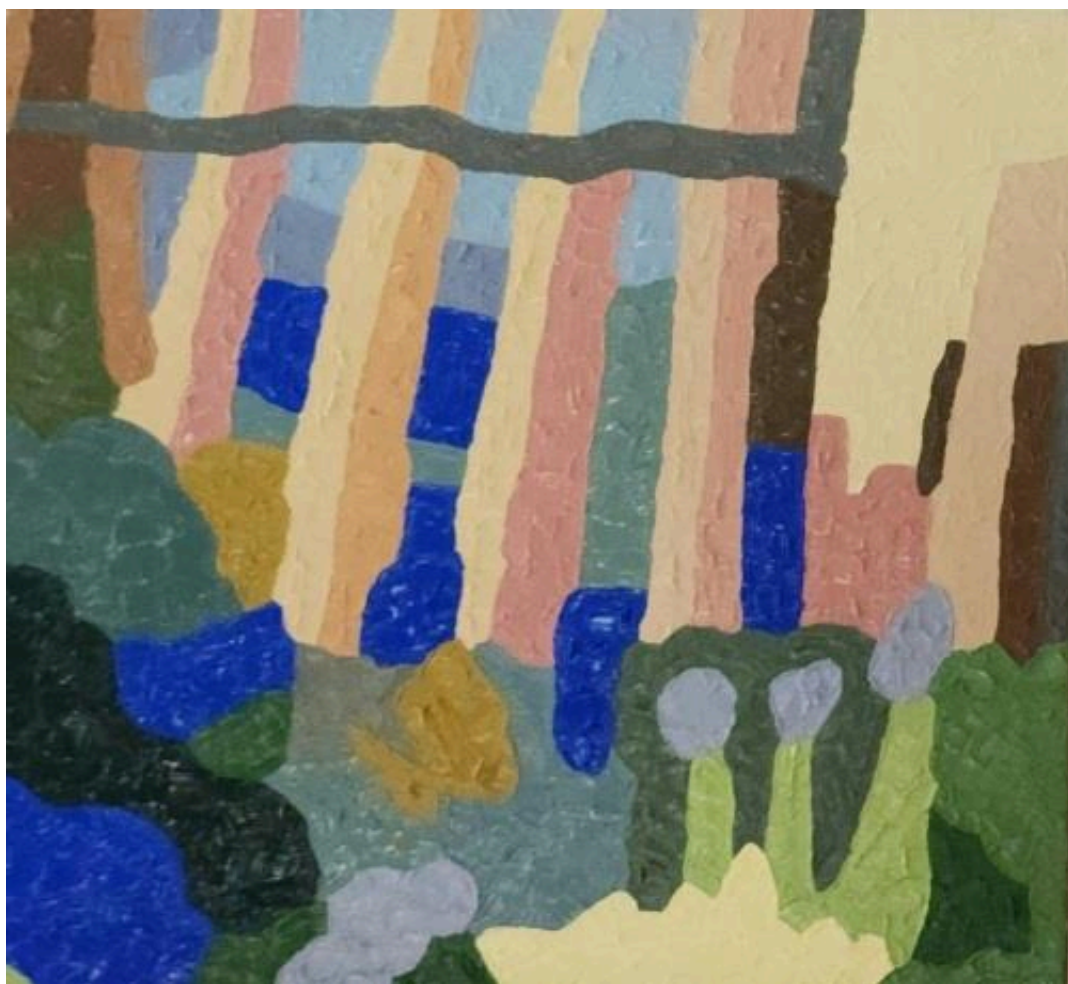
2023 oil on canvas (framed) 157 x 142cm \$8200





4 *The Cottage*

2023 oil on canvas (framed) 76 x 76cm \$4200



5 *The Garden Path*

2023 oil on canvas (framed) 76 x 76cm \$4200



6 *Leave It Be*

2023 oil on canvas (framed) 61 x 46cm \$2350





7 *The Gully*

2023 cotton, silk thread, pencil  
on linen 112 x 61cm \$1200



8 *Time Is All We Have*

2023 oil on canvas (framed) 176 x 133cm \$8400



9 *Idle Parklands*

2023 oil on canvas (framed)

91 x 91cm

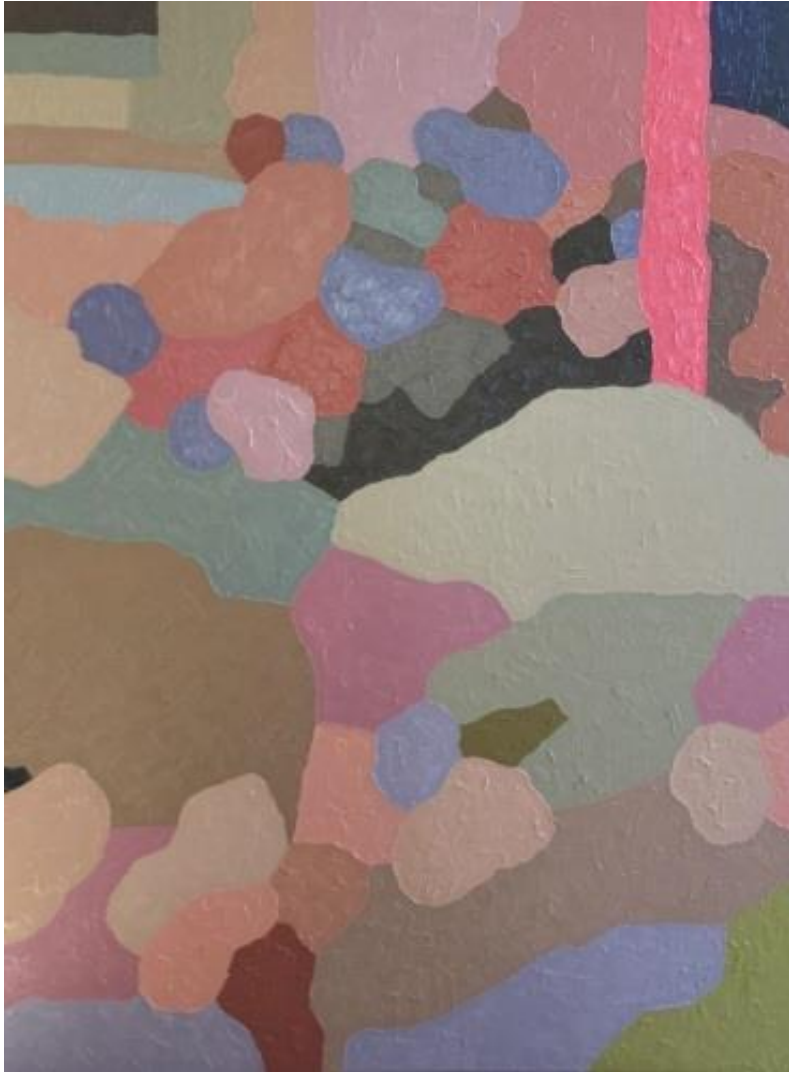
\$5350





10 *I See Myself (In You)*

2023 oil on canvas (framed) 122 x 152cm \$7100



11 *The Longer I Stay*

2023 oil on canvas (framed) 122 x 91cm \$6200



12 *Bush Landing*

2023 oil on canvas (framed) 61 x 45cm \$2350





13 *Away From Home*

2023 oil on canvas (framed) 61 x 46cm \$2350



14 *Leading Me Away*

2023 oil on canvas (framed) 122 x 61cm \$5100

*STALA Contemporary would like to acknowledge the continuing strength and culture of the Nyoongar Whadjuk people, traditional custodians of the land we stand on and offer our respects to Elders past, present and future.*



## **An independent commercial gallery space dedicated to contemporary art**

Stala Contemporary has exhibited and advocated for contemporary artists since 2006 across five gallery locations in Perth, WA.

Director Sherri Staltari is passionately committed to presenting a dynamic and diverse range of Australian and international artists' work through a monthly program of exhibitions and projects. Stala Contemporary is now open in its newly renovated gallery premises at 11 Southport St, West Leederville.



**Stala Contemporary**  
ART GALLERY + PROJECTS

11 Southport Street, West Leederville, 6007  
Wed - Sat 10am - 4pm  
Sherri Staltari (Director) +61 417 184 638  
info@stalacontemporary.com.au  
www.stalacontemporary.com.au