



Ellen Norrish

Memory Card

2 – 19 Nov 2022



Stala Contemporary
ART GALLERY + PROJECTS

12 Cleaver St, West Perth 6005

Wed - Sat 10am – 4pm

Sherri Staltari (Director) +61 417 184 638

info@stalacontemporary.com.au

www.stalacontemporary.com.au

Memory Card is the latest solo exhibition from West Australian figurative painter Ellen Norrish. Exploring the simultaneous pleasure and problem of excessive image accumulation, this new series of oil paintings respond to the artist's own digital hoard of travel photos, taken on a Nikon D70 camera between 2010 and 2014.

Of these ~11,400 JPEGs, the exhibition features a minute sample reproduced as painted landscapes, portraits and interiors from abroad - captured at a time when DSLR cameras were the primary tool of travel photography with the practice having not yet transitioned to smartphones.

Memory Card offers viewers an intriguing set of paintings of disparate subjects, small worlds that can only be connected by undisclosed personal narratives of the artist traveling in her late teens and early 20s. Exhibited together, the various subjects offer a multifaceted portrait, one view of life and its accumulated imagery.





Of Daniel Buren's "Echoes, Works in situ" 2011 2022 oil on board (framed) 46 x 61cm \$1900



Of Daniel Buren's "Echoes, Works in situ" 2011 2 2022 oil on board (framed) 46 x 61cm \$1900



Blue Morning 2

2022

oil on board (framed)

41 x 50cm (framed)

\$1500



Metz

2022

oil on board (framed)

50 x 41cm

\$1500



From St Petrisberg 2022

oil on board (framed)

41 x 50cm

\$1500



Spidermen

2022

oil on board (framed)

27 x 35cm

\$850



Rijksmuseum doors 2022 oil on board (framed) 41 x 50cm \$1500



Reminds me of Rowan

2022

oil on board (framed)

50 x 41cm

\$1500



Swans in Strasbourg

2022

oil on board (framed)

27 x 35cm

\$850



Amazon on horseback

2022

oil on board (framed)

27 x 35cm

\$850



Cycling past farms 2022

oil on board (framed)

27 x 35cm

\$850



Spying 2022 oil on board (framed) 27 x 35cm \$850



Rowan in Versailles

2022

oil on board (framed)

46 x 61cm

\$1900



Watertower

2022

oil on board (framed)

46 x 61cm

\$1900

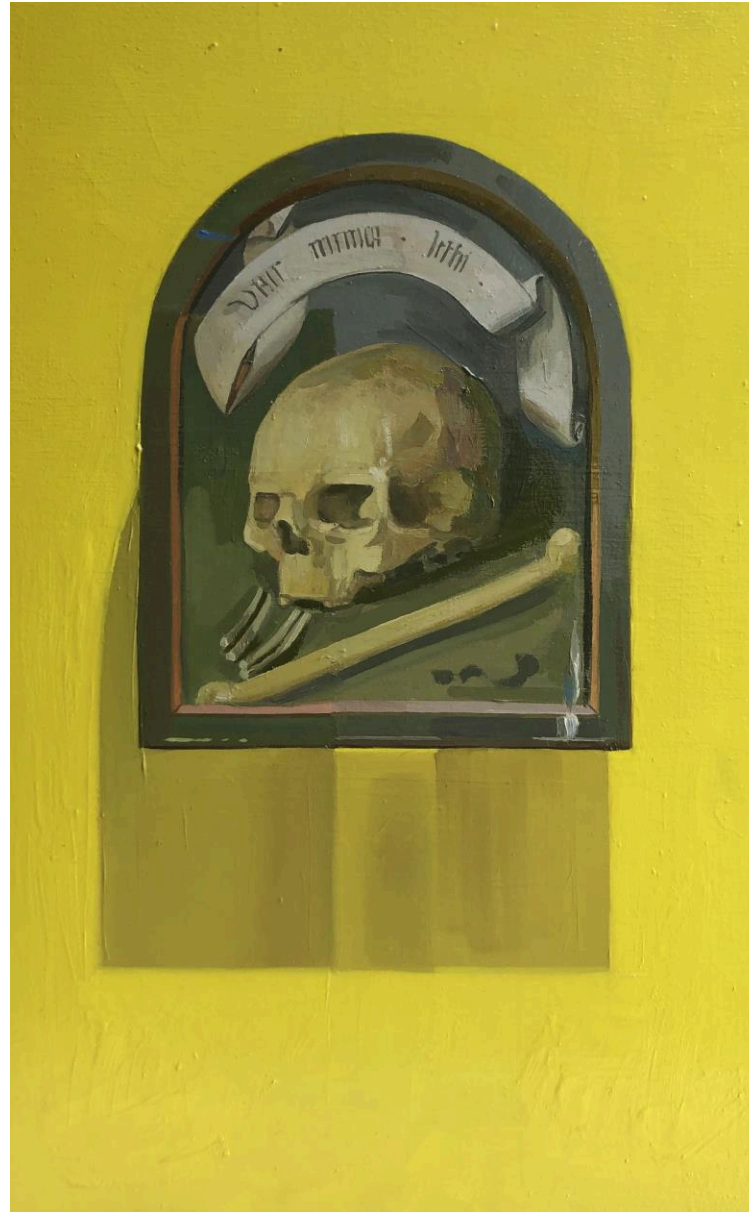


Bust at the Stadtmuseum Simeonstift 2022

oil on board

40 x 25cm

NFS

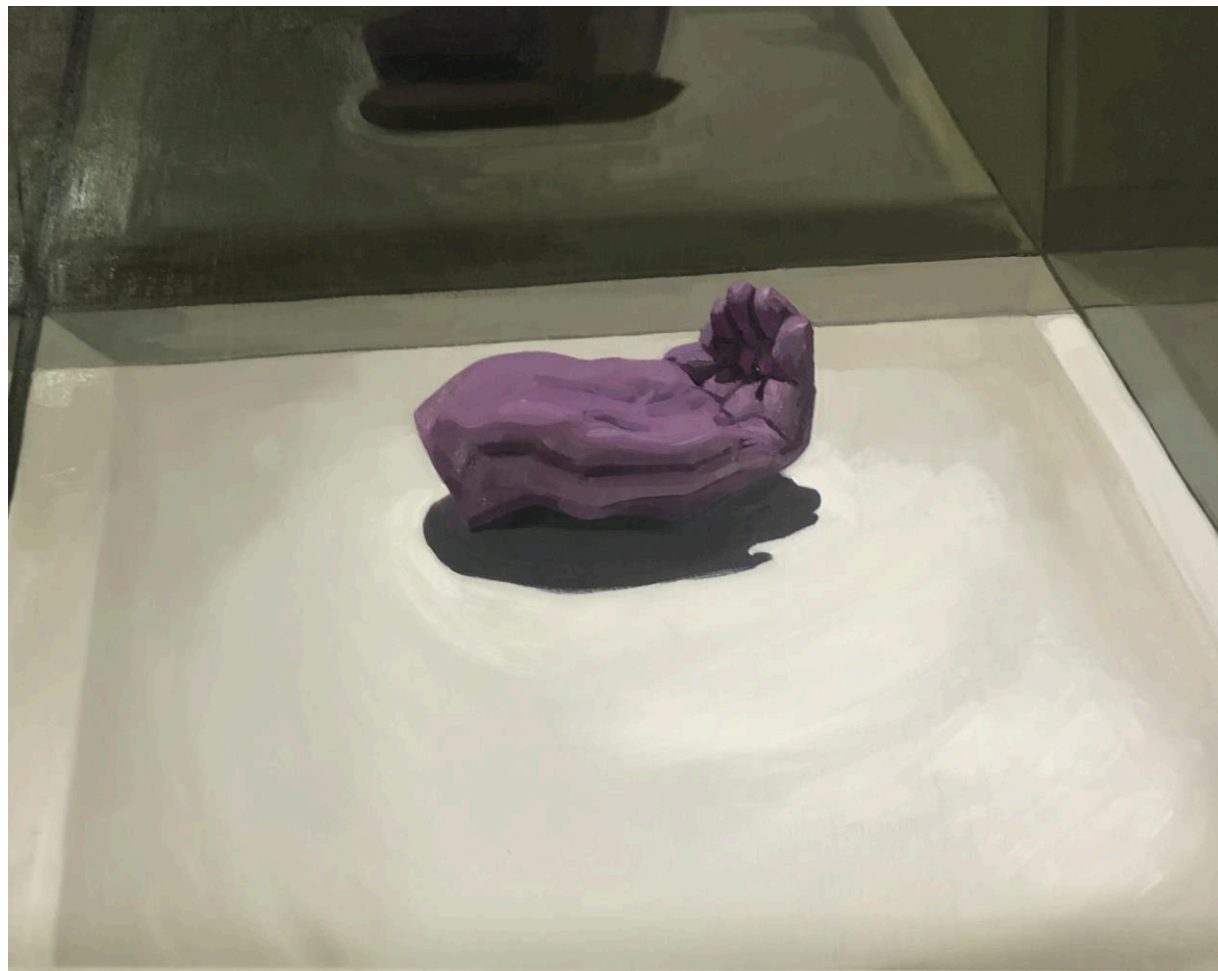


Skull at the Stadtmuseum Simeonstift 2022

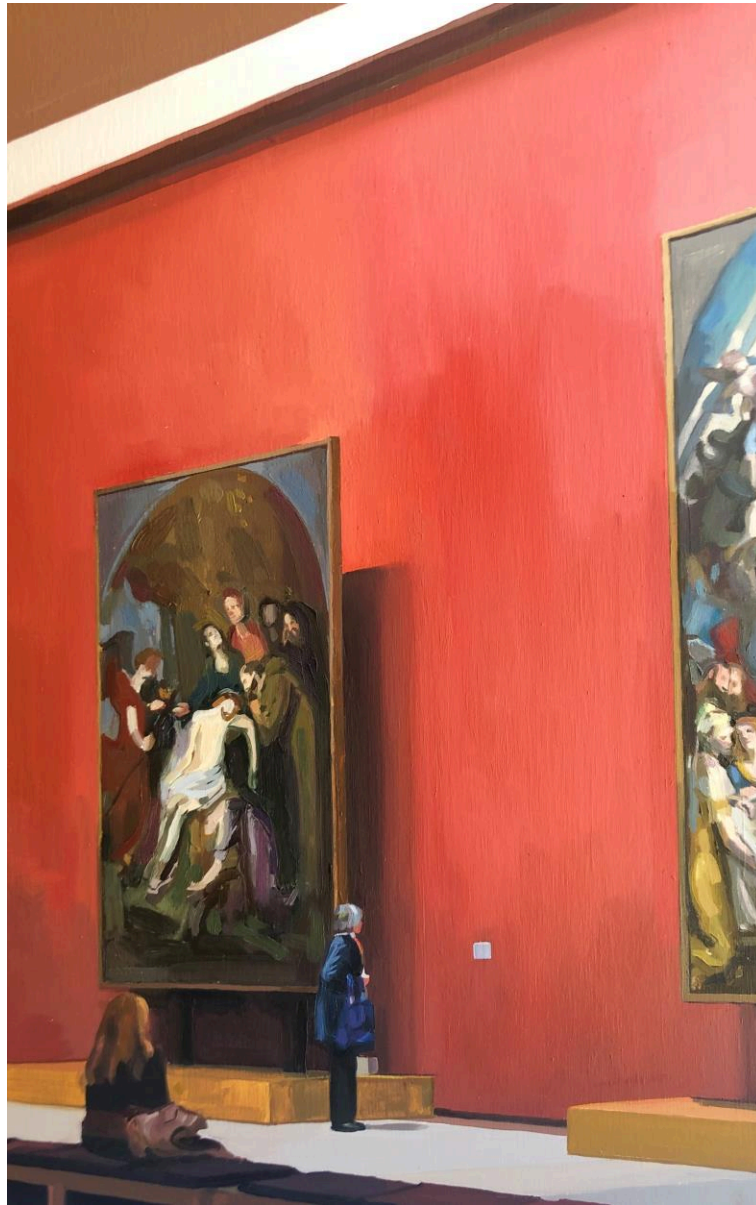
oil on board

40 x 25cm

NFS



Hand at the Stadtmuseum Simeonstift 2022 oil on board (framed) 40 x 50cm \$ 1400



The Rubens Room 2021

oil on board

53 x 33cm

NFS



Statues at the Stadtmuseum Simeonstift

2022

oil on board (framed)

27 x 35cm

\$850



Self portrait on carousel

2022

oil on board (framed)

27 x 35cm

\$850



Portraits at the Stadtmuseum Simeonstift

2022

oil on board (framed)

35 x 27cm

\$1000

STALA Contemporary would like to acknowledge the continuing strength and culture of the Nyoongar Whadjuk people - traditional custodians of the land we stand on, and offer our respects to Elders past, present and future.



Stala Contemporary

ART GALLERY + PROJECTS



12 Cleaver St, West Perth 6005

Wed - Sat 10am – 4pm

Sherri Staltari (Director)

+61 417 184 638

info@stalacontemporary.com.au

www.stalacontemporary.com.au

ABOUT THE GALLERY

Stala Contemporary is a contemporary art gallery located at 12 Cleaver Street, West Perth WA in the burgeoning artistic community known as The Pickle District. It is housed in one of the many hidden industrial warehouse spaces in the area that are increasingly being re-purposed as eclectic spaces for small business and creative projects.

Formerly a commercial glaziers warehouse, the gallery's old timber trussed roof and high ceilings, white painted brickwork walls, roller door and sealed concrete floor proudly displaying the cracks and paint splatters of its industrial past make it a unique contemporary art gallery space.

Gallery Director Sherri Staltari has championed Australian contemporary artists since 2006. She was a co-director of her previous gallery emerge ART SPACE gallery at three locations across Perth from 2006 - 2016. She launched her new gallery Stala Contemporary in 2017 and is committed to presenting a range of diverse contemporary artists' work and exhibitions. Stala Contemporary is scheduled to open in its new fifth bricks-and-mortar gallery premises in the dynamic inner city Flower District precinct of West Leederville in 2023.